

Local Climate Adaptation Tool (LCAT)

Supporting adaptation action to improve health and wellbeing

Emma Bland¹, Timothy J. Taylor¹, Jess Dicken¹, Philippa Mina¹, Marissa Rice¹, Andrew Walton¹, Rhys Hobbs², Simon Kirby¹, Fliss Guest¹, Peter Lefort¹ [¹ University of Exeter, Exeter, United Kingdom. ² Cornwall Council, Cornwall, United Kingdom]

The Challenge:

The need to adapt to climate change is urgent and local decision makers are at the front line in this. However, many lack the information, time and access to evidence to plan for the future climate scenarios.

The Solution:

LCAT is an on-line tool that supports decision-makers at a local level take evidence-informed climate action.

Designed with and created for local UK decision-makers, our goal is to adapt LCAT for communities across Europe.



How did we create LCAT?

Stakeholder engagement is at the core of LCAT's development.

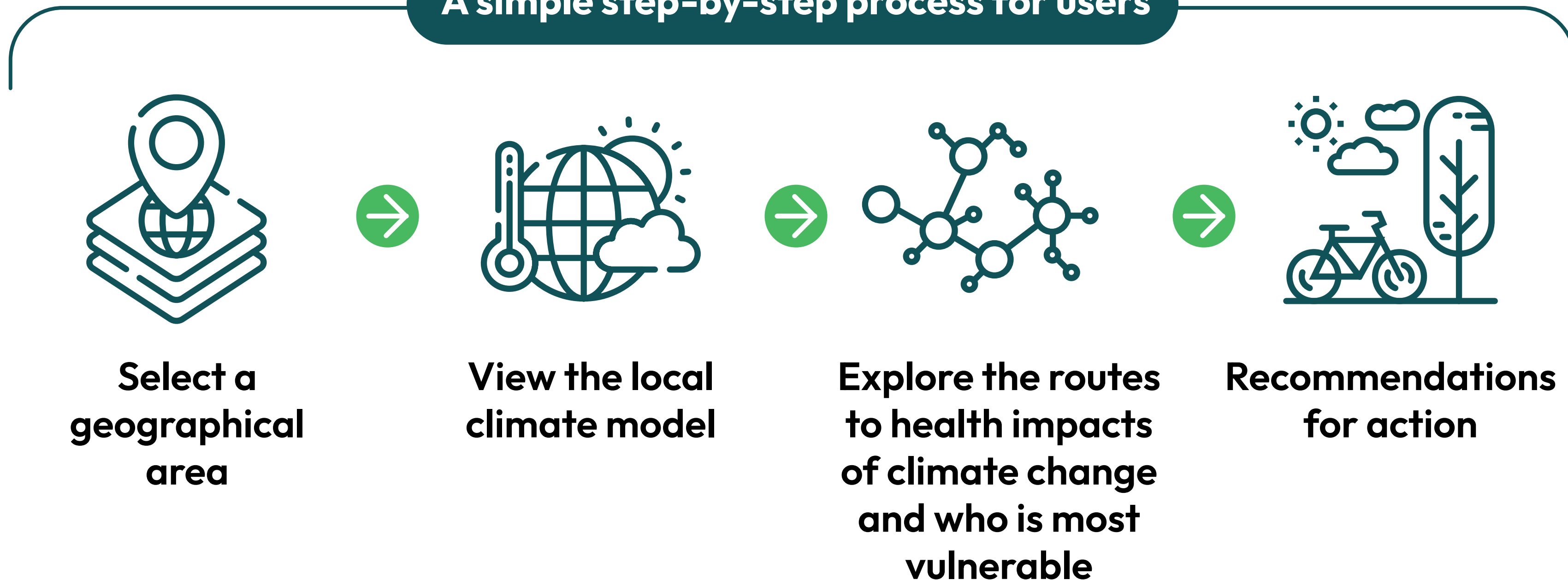
Accessing data from open-source repositories ensures LCAT remains free, and presenting this data in accessible formats ensures stakeholders can understand and use the information.

Evidence reviews began with the UK Climate Change Risk Assessment and the IPCC 2023 reports, followed by additional literature searches focusing on health and wellbeing impacts for LCAT.

Case studies were identified to include examples of action taken by local organisations.

mDPSEEA framework and **causal loop diagrams** were used to show the evidence of climate change impacts on health.

A simple step-by-step process for users



www.blueadapt.eu/project/lcat
LCAT@exeter.ac.uk

